

St Catherines Court, London, W4 1UH

Guide Price £500,000

WHITMAN & CO.

SALES · LETTINGS · COMMERCIAL

- Light and spacious top floor apartment
- West facing reception room
- Communal gardens
- Sought after location
- Two/three bedrooms
- No onward chain

Tenure - Leasehold with share of freehold
 Lease Length - 982 Years remaining
 Ground rent - Peppercorn
 Service Charge inc. Reserve Fund - £5850 pa
 Local Authority - Ealing
 Council Tax - Band E

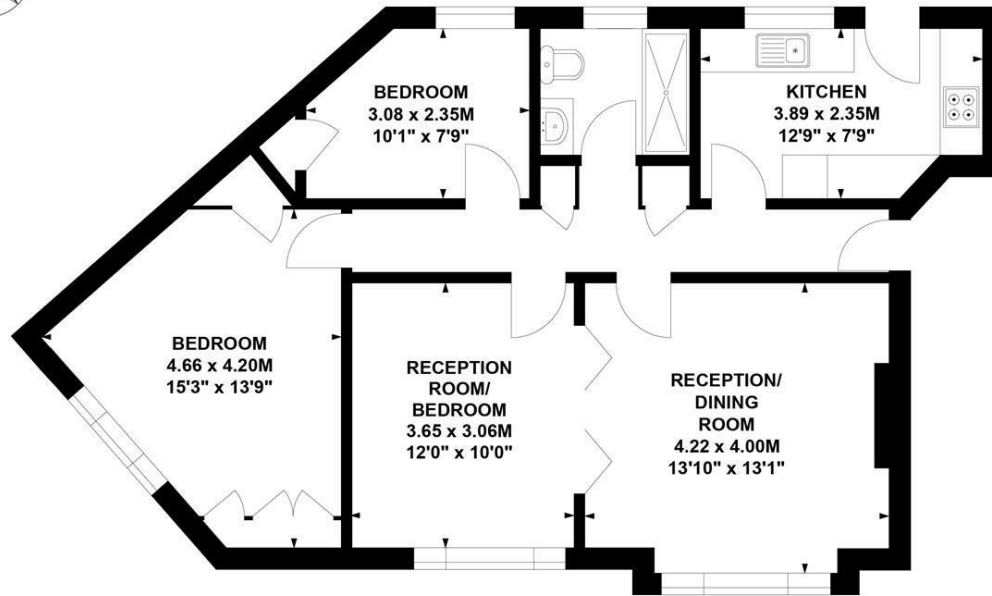
THE PROPERTY

A light and spacious top floor two/three bedroom apartment situated in this exceptionally popular residential road in the heart of the Bedford Park Conservation area within a short walk of both Turnham Green station and Chiswick High Road. The accommodation provides a spacious west-facing reception room, an interconnecting second reception room/bedroom three, a recently fitted kitchen, two bedrooms with fitted wardrobes, a bathroom, an entrance hallway, heating and hot water included in the service charge and a large communal garden. The flat is located on the corner of Bedford Road and Newton Grove, a premier position in the Bedford Park area, within a short walk of Turnham Green station, local parks and the extensive shopping, cafe and restaurant facilities on Chiswick High Road and Turnham Green Terrace. No onward chain.

St. Catherines Court, W4

Approximate Gross Internal Area
 73 sq m / 786 sq ft

Key :
 CH - Ceiling Height



Second Floor

Not to scale, for guidance only and must not be relied upon as a statement of fact.
 All measurements and areas are approximate only

SITUATION



5-7 Turnham Green Terrace, Chiswick, London, W4 1RG

Tel 020 8747 8800

E-mail sales@whitmanandco.com

Website www.whitmanandco.com

